

VILLAGE OF ELBRIDGE

210 WEST MAIN STREET * POST OFFICE BOX 267 * ELBRIDGE, NY 13060

315-689-3404 PHONE * 315-689-7851 FAX

WWW.VILLAGEOFELBRIDGE.COM

Mayor

Christopher A. DeCola

Clerk-Treasurer

Tammy L. Kunz

Deputy Clerk

Melissa L. Godfrey

Trustees

Anthony W. DeMarco

Stephanie A. Harris

John F. Murray

Patrick V. Ely

WELCOME

New Residents:

We want to take this opportunity to welcome you to the Village of Elbridge. Our community is concerned about its neighborhood's safety, upkeep, services and environment. Enclosed please find several guides to help you become a part of our Village.

We encourage you to come to our Village Meetings, which are held on the first Monday of each month at 7:00 p.m. You'll get to know the Village officials and can voice your ideas and opinions. Trustees are available to help you with water, street, lighting, policy and other problems. Feel free to call the Village Office to get specific help.

We are also enclosing a brief list of zoning information. We have a copy of the complete Zoning Laws and Regulations available at the Village Office or you can find them on our website; www.villageofelbridge.com. For example, garage sales require a permit. Our Code Enforcement Officer will be glad to help you decide if you need a permit for a special project or change in your home.

If you have any questions please don't hesitate to get in touch with us.

Once again, welcome to our community!

Sincerely,

Board of Trustees
Village of Elbridge



Christopher A. DeCola
Mayor



Anthony W. DeMarco
Trustee



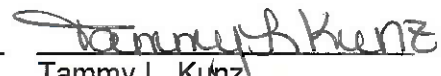
Stephanie A. Harris
Trustee



John F. Murray
Trustee



Patrick V. Ely
Trustee



Tammy L. Kunz
Clerk-Treasurer

GARBAGE/RECYCLABLES

Garbage is picked up by our contractor every Tuesday. Garbage pickup begins EARLY, if necessary, please put your garbage out the night before. Garbage totes have been provided for your property by our Hauler and has a BLACK lid. All trash is to be in a bag, large liners are not necessary, but please no loose trash.

Recyclables are picked up with the regular garbage collection. Recycling bin has also been provided by the hauler and has the ORANGE lid.

Brush (Max 3" diameter by 6-8' long) is picked up by the Village as time permits. No grass trimmings, leaves are accepted in brown paper bags no plastic bags.

Onondaga County Solid Waste Facilities available to residents is: Rock Cut, 469-6971, off Route 481.

RESIDENTS PLEASE NOTE FOLLOWING GUIDELINES!

It is appreciated if the containers are easily handled/lifted by the hauler employees. Containers that are unmanageable, has loos trash, filled with water/ice/snow may not be taken.

If an additional container is needed, or you need a larger container, please contact Superior directly to discuss options.

No limbs of trees, logs, brush, leaves, lawn trimmings and construction material will be taken by the contractor.

All materials shall be placed at the road's edge, and all trash shall be in containers that are in good condition and in garbage bags.

In the event there is freezing weather, trash shall be properly wrapped or placed in plastic bags so as not to freeze in the containers.

All residents will adhere to the terms of this contract and bring their trash, papers, and rubbish to the road's edge adjacent to their property, whether public or private, in containers that have been provided by the hauler.

Rubbish and recyclable pickups are to take place between six A.M. and three P.M. in an established uniform schedule on a week day.

Trash and or recyclable refuse not properly separated according to Village and County standards shall be left and the contractor shall notify the homeowner as to the reason their trash and or recyclables was not picked up.

If you need to contact the hauler, they are Superior Waste Removal and can be reached at (315) 672-3174.

GARBAGE/RECYCLABLES

Garbage is picked up by our contractor every Tuesday. Garbage pickup begins EARLY, if necessary, please put your garbage out the night before. Garbage totes have been provided for your property by our Hauler and has a BLACK lid. All trash is to be in a bag, large liners are not necessary, but please no loose trash.

Recyclables are picked up with the regular garbage collection. Recycling bin has also been provided by the hauler and has the ORANGE lid.

Brush (Max 3" diameter by 6-8' long) is picked up by the Village as time permits. No grass trimmings, leaves are accepted in brown paper bags no plastic bags.

Onondaga County Solid Waste Facilities available to residents is: Rock Cut, 469-6971, off Route 481.

RESIDENTS PLEASE NOTE FOLLOWING GUIDELINES!

It is appreciated if the containers are easily handled/lifted by the hauler employees. Containers that are unmanageable, has loose trash, filled with water/ice/snow may not be taken.

If an additional container is needed, or you need a larger container, please contact Superior directly to discuss options.

No limbs of trees, logs, brush, leaves, lawn trimmings and construction material will be taken by the contractor.

All materials shall be placed at the road's edge, and all trash shall be in containers that are in good condition and in garbage bags.

In the event there is freezing weather, trash shall be properly wrapped or placed in plastic bags so as not to freeze in the containers.

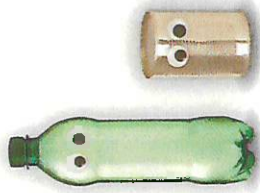
All residents will adhere to the terms of this contract and bring their trash, papers, and rubbish to the road's edge adjacent to their property, whether public or private, in containers that have been provided by the hauler.

Rubbish and recyclable pickups are to take place between six A.M. and three P.M. in an established uniform schedule on a week day.

Trash and or recyclable refuse not properly separated according to Village and County standards shall be left and the contractor shall notify the homeowner as to the reason their trash and or recyclables was not picked up.

If you need to contact the hauler, they are Superior Waste Removal and can be reached at (315) 672-3174.

CURBSIDE RECYCLING



- ⊗ **Do not bag recycling.** Place items in bin loose.
- ⊗ **No textiles/clothes,* footwear, etc.** — donate if wearable.
- ⊗ **No needles/syringes,* film plastics,* food waste* or toxic items.***
- ⊗ **Avoid “wish-cycling” — when in doubt, throw it out.**
- ✔ **Plastics:** Ignore the numbers; use shape to decide recyclability: bottle, jar, jug or dairy tub = recycle.
- ✔ **Paper:** Empty and flatten boxes. Remove packing or film plastics in or around boxes.
- ✔ **Containers:** Must be empty and rinsed. Labels are okay.
- ✔ **Lids and caps:** Reattach.

*Go to OCCRA.org and type in your item to find recycling or disposal options.

WHAT HAPPENS TO TRASH IN ONONDAGA COUNTY?



Trash is turned into electricity at the Waste-to-Energy Facility in Jamesville; it does not go to a landfill.

Each year this reduces greenhouse gas emissions equivalent to taking more than 60,000 vehicles off the road, makes enough energy to power 30,000 homes and recovers all metal in the trash, which is enough to build more than 10,000 cars!

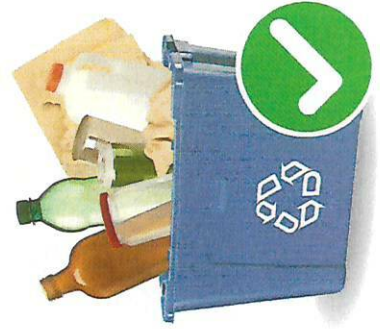
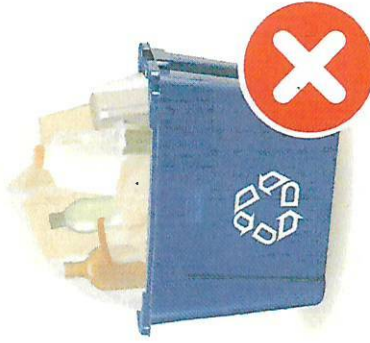
CAN'T FIND WHAT YOU'RE LOOKING FOR? SEARCH OUR DATABASE!

Go to OCCRA.org and type in your item to find recycling or disposal options.



RECYCLING RULES

DON'T BAG RECYCLABLES
IN PAPER OR PLASTIC BAGS!



PLACE RECYCLING LOOSE IN BIN!



(315) 453-2866 | OCCRA.org



CURBSIDE RECYCLING



DON'T BAG RECYCLABLES



DROP OFF TO RECYCLE



TRASH



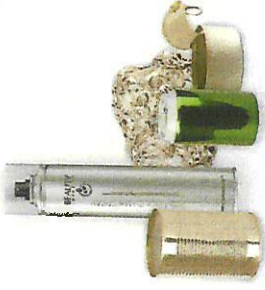
PAPER

- Newspapers, magazines, catalogs and softcover books. *Keep loose, don't tie.*
- Papers and mail (including window envelopes)
- Boxes: Cardboard, takeout pizza, pasta, cereal, etc. *Empty and flatten.*
- Cartons: Milk, juice, soup, etc. (plastic spouts = OK) *Empty, rinse and reattach cap.*



PLASTIC (IGNORE NUMBERS; RECYCLE BY SHAPE)

- Bottles: Beverage, soap, shampoo, squeeze, spray, etc. (no bottles that held toxics) *Empty, rinse and reattach cap.*
- Jars: Mayonnaise, sauce, nuts, jelly, etc. *Empty, rinse and reattach cap.*
- Jugs (items with a handle): Milk, orange juice, water, detergent, windshield fluid, etc. *Empty, rinse and reattach cap.*
- Stackable tubs (dairy/dairy alternative only): Butter, yogurt, cottage cheese, etc. *Empty, rinse and reattach lid.*



METAL

- Food and beverage cans *Empty, rinse and place lid inside can.*
- Aluminum foil and disposable aluminum pans and plates *Must be clean and wadded up.*
- Aerosol cans *Must be empty. No cans that held toxics; they should go in the trash.*

- Plastic bags (clean and dry) *Recycle at large grocery and retail stores.*

- Electronics *Visit ocrra.org/ewaste for details.*

- Tangles (cords, hoses, etc.)
- "Clamshells" (berry, salad, bakery cartons)
- Takeout or fast food boxes
- Disposable cups, lids and utensils
- Prescription vials
- Tires
- Containers that held toxics

- Propane tanks *Visit ocrra.org/propane-tanks for details.*

- Fire extinguishers *Visit ocrra.org/fire-extinguishers for details.*

- Any metals not listed above
- Small appliances (toasters, vacuums, etc.)
- Combination metal-cardboard canisters (oatmeal, cocoa, peanuts, coffee, etc.)
- Empty metal paint cans



GLASS

- Food containers: Salsa, jam, sauce, salad dressing, etc. *Empty, rinse and reattach lid.*
- Beverage containers (any color) *Empty, rinse and reattach cap.*
- Wine and liquor bottles *Option: They can also be brought to a participating redemption center to ensure they are turned into new bottles. Get details at OCRRR.org.*

- Light bulbs *Visit ocrra.org/fluorescent-bulbs for details. Place LED and incandescent bulbs in the trash.*

- Broken glass
- Drinking glasses
- Ovenware, ceramics and dishes
- Window and picture glass
- Mirrors