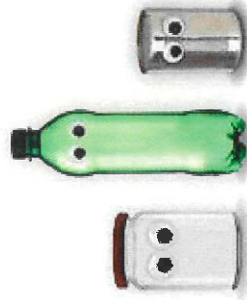


# CURBSIDE RECYCLING



- ⊗ **Do not bag recycling.** Place items in bin loose.
- ⊗ **No textiles/clothes,\* footwear, etc.** — donate if wearable.
- ⊗ **No needles/syringes,\* film plastics,\* food waste\* or toxic items.\***
- ⊗ **Avoid “wish-cycling” — when in doubt, throw it out.**
- ✔ **Plastics:** Ignore the numbers; use shape to decide recyclability: bottle, jar, jug or dairy tub = recycle.
- ✔ **Paper:** Empty and flatten boxes. Remove packing or film plastics in or around boxes.
- ✔ **Containers:** Must be empty and rinsed. Labels are okay.
- ✔ **Lids and caps:** Reattach.

\*Go to [OCRRRA.org](http://OCRRRA.org) and type in your item to find recycling or disposal options.

## WHAT HAPPENS TO TRASH IN ONONDAGA COUNTY?



Trash is turned into electricity at the Waste-to-Energy Facility in Jamesville; it does not go to a landfill.

Each year this reduces greenhouse gas emissions equivalent to taking more than 60,000 vehicles off the road, makes enough energy to power 30,000 homes and recovers all metal in the trash, which is enough to build more than 10,000 cars!

## CAN'T FIND WHAT YOU'RE LOOKING FOR? SEARCH OUR DATABASE!

Go to [OCRRRA.org](http://OCRRRA.org) and type in your item to find recycling or disposal options.



(315) 453-2866 | [OCRRRA.org](http://OCRRRA.org)

070122



# RECYCLING RULES

## DON'T BAG RECYCLABLES

IN PAPER OR PLASTIC BAGS!



## PLACE RECYCLING LOOSE IN BIN!





## CURBSIDE RECYCLING



## DON'T BAG RECYCLABLES



## PAPER

- Newspapers, magazines, catalogs and softcover books  
*Keep loose, don't tie.*
- Papers and mail (including window envelopes)
- Boxes: Cardboard, takeout pizza, pasta, cereal, etc.  
*Empty and flatten.*
- Cartons: Milk, juice, soup, etc. (plastic spouts = OK)  
*Empty, rinse and reattach cap.*

## Shredded paper

*Recycle for free at Bodow Recycling, 1925 Park St., Syracuse, [bodowrecycling.com](http://bodowrecycling.com); or put in the trash.*

- Frozen food boxes
- Soda/beer boxes
- Egg cartons (any type)
- Items with glitter or foil
- Takeout or fast food boxes
- Plates and cups
- Tissue paper
- Hardcover books



## PLASTIC (IGNORE NUMBERS; RECYCLE BY SHAPE)

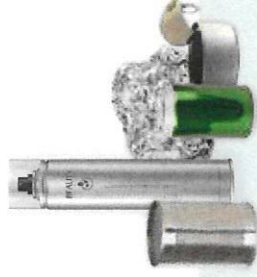
- Bottles: Beverage, soap, shampoo, squeeze, spray, etc. (no bottles that held toxics)  
*Empty, rinse and reattach cap.*
- Jars: Mayonnaise, sauce, nuts, jelly, etc.  
*Empty, rinse and reattach cap.*
- Jugs (items with a handle): Milk, orange juice, water, detergent, windshield fluid, etc.  
*Empty, rinse and reattach cap.*
- Stackable tubs (dairy/dairy alternative only): Butter, yogurt, cottage cheese, etc.  
*Empty, rinse and reattach lid.*

## Plastic bags (clean and dry)

*Recycle at large grocery and retail stores.*

- Electronics  
*Visit [ocrra.org/ewaste](http://ocrra.org/ewaste) for details.*

- Tangles (cords, hoses, etc.)
- "Clamshells" (berry, salad, bakery cartons)
- Takeout or fast food boxes
- Disposable cups, lids and utensils
- Prescription vials
- Tires
- Containers that held toxics



## METAL

- Food and beverage cans  
*Empty, rinse and place lid inside can.*
- Aluminum foil and disposable aluminum pans and plates  
*Must be clean and wadded up.*
- Aerosol cans  
*Must be empty. No cans that held toxics; they should go in the trash.*

## Propane tanks

*Visit [ocrra.org/propane](http://ocrra.org/propane) for details.*

- Fire extinguishers  
*Visit [ocrra.org/fire](http://ocrra.org/fire) for details.*

- Any metals not listed above
- Small appliances (toasters, vacuums, etc.)
- Combination metal-cardboard canisters (oatmeal, cocoa, peanuts, coffee, etc.)
- Empty metal paint cans



## GLASS

- Food containers: Salsa, jam, sauce, salad dressing, etc.  
*Empty, rinse and reattach lid.*
- Beverage containers (any color)  
*Empty, rinse and reattach cap.*
- Wine and liquor bottles  
*Option: They can also be brought to a participating redemption center to ensure they are turned into new bottles. Get details at [OCRRA.org](http://OCRRA.org).*

## Light bulbs

*Visit [ocrra.org/fluorescent](http://ocrra.org/fluorescent) for details. Place LED and incandescent bulbs in the trash.*

- Broken glass
- Drinking glasses
- Ovenware, ceramics and dishes
- Window and picture glass
- Mirrors



## DROP OFF TO RECYCLE



## TRASH